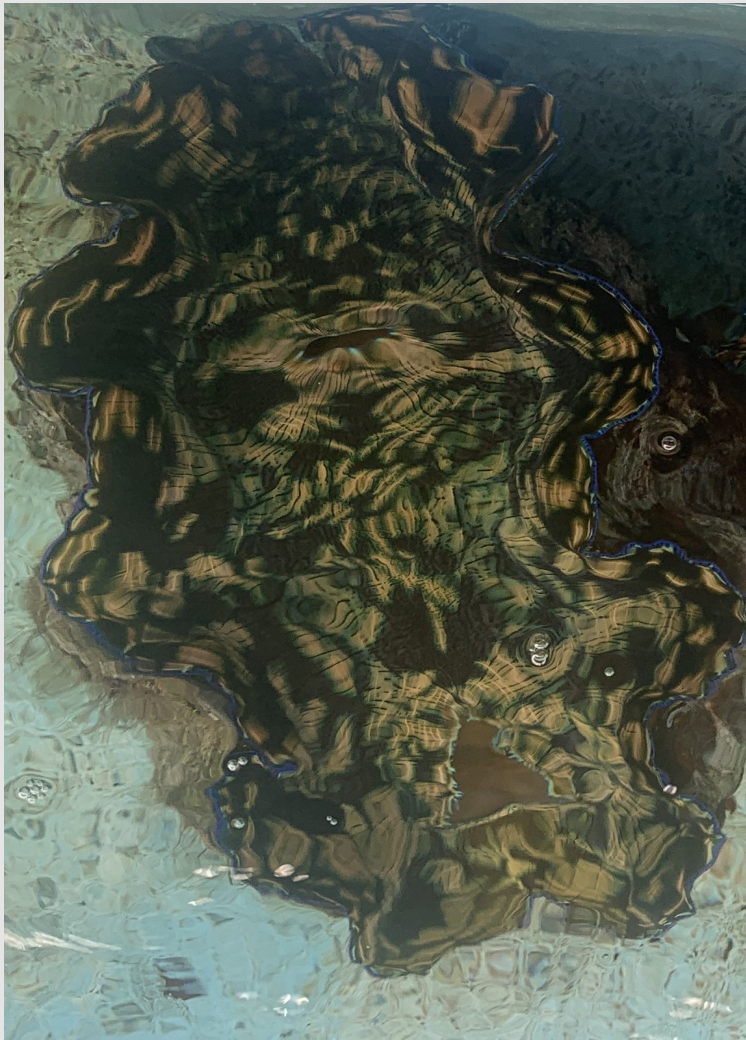


# Kism



*Tridacna derasa*, locally known as kism, is a species of giant clam that inhabit the coastal waters of Palau. They are colorful with unique designs. They can grow up to 24 inches or 60 centimeters. Kism are a staple source of food in the local diet and the shells can be made into tools, decorations or lime.

# Ribkungel



*Tridacna squamosa*, locally known as ribkungel, is known for its scaly shell is found throughout Palau, most especially in the rock island southern lagoon. It is a staple in the local diet and grows up to 17.7 inches or 45 centimeters.